

Courtside

3,540+ sq.ft.

3-4 bedrooms | 3.5-4.5 bathrooms | 3 car garage

PUEBLO ELEVATION



INCLUDED FEATURES:

- 12' Ceilings in Foyer and Gathering Room
- Large Gated Courtyard
- Interior Fireplace
- Game Room
- Den
- Owner's Suite with Retreat
- Wet Bar
- Outdoor Covered Patio
- Chef Kitchen Layout with Granite Countertop and Backsplash
- Whirlpool® ENERGY STAR® Stainless Steel Appliances
- 18"x18" Tile Flooring in Wet Areas
- MasterCraft® Recessed Maple Cabinets
- Decorative Skip-Trowel Drywall Finish

PUEBLO ELEVATION WITH STONE



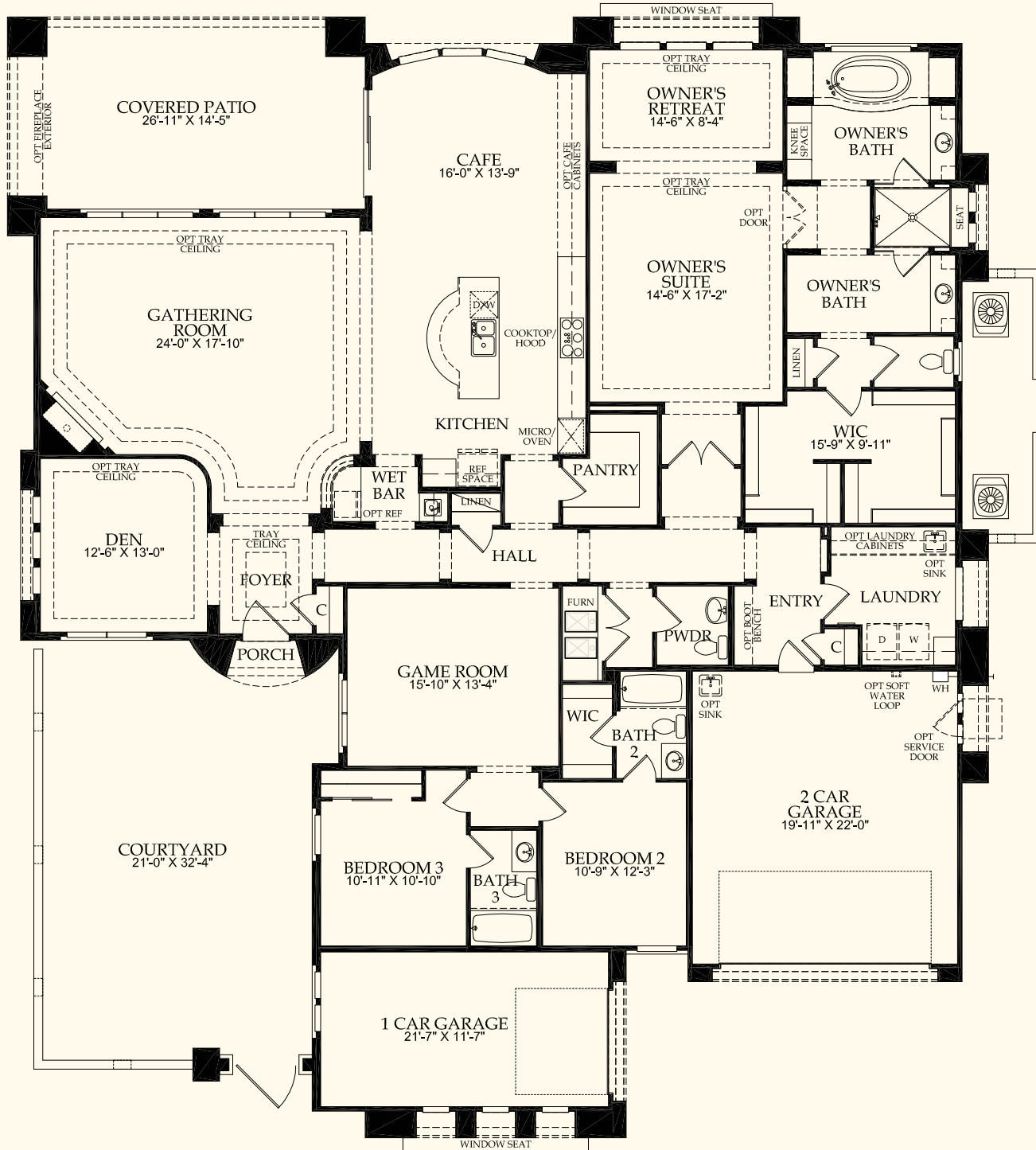
OPTIONAL FEATURES TO MEET YOUR NEEDS:

- Choice of Pueblo or Contemporary Architecturally Designed Exterior Elevations
- Separate Casita with Full Bath
- Outdoor Cabana with Fireplace
- Culinary or Pro Premier Kitchen Layout
- Wolf® and SubZero® Appliances
- Kitchen Executive Island
- Gathering Room Audio Visual Built-In with Fireplace and Optional Stone Veneer
- Pella® Multi-Panel Center Sliding Glass Door
- Den with Optional French Doors for Privacy
- Owner's Retreat 3-Way Fireplace
- Luxury Owner's Bath with Freestanding Tub
- Beams at Ceiling in Select Locations
- Tongue & Groove Ceiling in Select Locations
- Coffered Ceiling in Select Locations
- Tray Ceiling in Select Locations

CONTEMPORARY ELEVATION



The 3-bedroom Courtside invites comfort and exudes modern elegance. A flow-through kitchen, café and gathering room connect to create the perfect space for those who like to entertain. The versatile design allows for an optional casita or cabana along with extra garage space. The Owner's Suite is the ultimate hideaway, offering a private retreat complete with a luxurious bath, floating vanities and oversized walk-in closet.



pulte.com/lascampanas | 218 Camino La Tierra, Santa Fe, NM 87506 | 505.349.9925 | lascampanas@pulte.com

In our continuing effort to improve our product, Pulte Homes reserves the right to make changes or modifications to plan specifications, materials, features, or floor plans without notice. Room dimensions and square footages listed are approximate and actual square footage may vary by elevation. Please see a sales associate for details. Renderings are for illustrative purposes only and is not intended to be an actual representation of a specific home being offered. This material shall not constitute a valid offer in any state where prior registration is required or if void by law. Additional conditions, limitations, and restrictions apply; see a sales associate for details. ©2017 Pulte Home Corporation. PGI Realty 505-761-9606. All rights reserved. 9/17

