

Catalina

2,669+ sq.ft.

3-4 bedrooms | 2.5-3.5 bathrooms | 2-4 car garage

PUEBLO ELEVATION



PUEBLO ELEVATION WITH STONE



CONTEMPORARY ELEVATION



INCLUDED FEATURES:

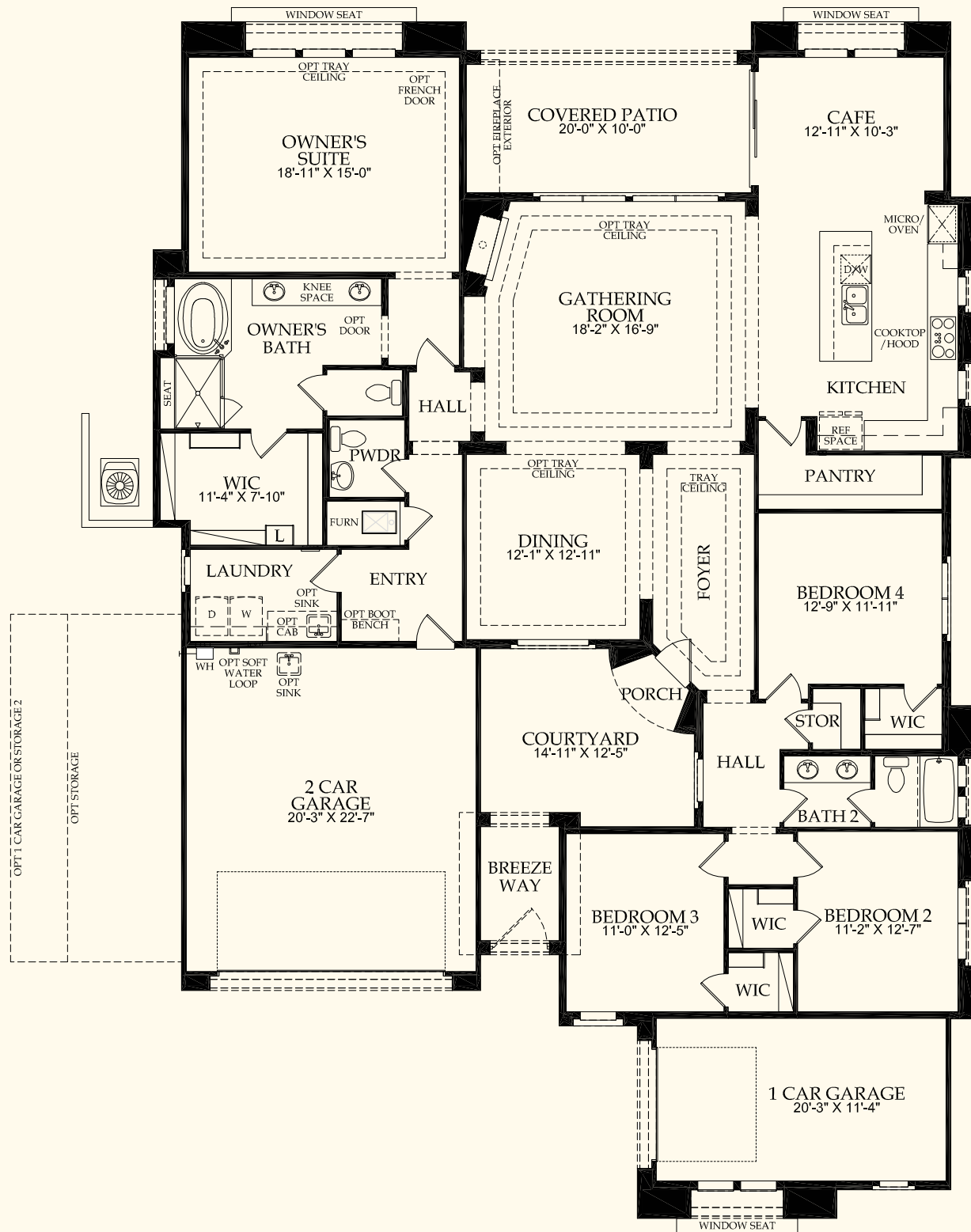
- 12' Ceilings in Foyer and Gathering Room
- Breezeway with Gated Courtyard
- Foyer
- Interior Fireplace
- Formal Dining Room
- Large Outdoor Covered Patio
- Chef Kitchen Layout with Granite Countertop and Backsplash
- Whirlpool® ENERGY STAR® Stainless Steel Appliances
- 18"x18" Tile Flooring in Wet Areas
- MasterCraft® Recessed Maple Cabinets
- Decorative Skip-Trowel Drywall Finish
- Owner's Suite with Large Walk-In Closet

OPTIONAL FEATURES TO MEET YOUR NEEDS:

- Choice of Pueblo or Contemporary Architecturally Designed Exterior Elevations
- Culinary or Pro Premier Kitchen Layout
- Wolf® and SubZero® Appliances
- Kitchen Executive Island
- Bow Window at Owner's Suite and/or Café
- Guest Suite with Living Area
- Den with Optional French Doors for Privacy
- Game Room
- Additional Garage Storage
- Additional 1-Car Garage
- Gathering Room Audio Visual Built-In with Fireplace and Optional Stone Veneer
- Outdoor Fireplace with Optional Stone Veneer
- Pella® Multi-Panel Center Sliding Glass Door
- Beams at Ceiling in Select Locations
- Tongue & Groove Ceiling in Select Locations
- Coffered Ceiling in Select Locations
- Tray Ceiling in Select Locations



The versatile Catalina offers up to 4 bedrooms with an open flow-through kitchen and café overlooking the gathering room, offering ideal space for entertaining and everyday living. Sliding glass doors in the gathering room offer natural light and flow to the covered patio. Options for this plan include a guest suite or den which can easily become a home office.



pulte.com/lascampanas | 218 Camino La Tierra, Santa Fe, NM 87506 | 505.349.9925 | lascampanas@pulte.com

In our continuing effort to improve our product, Pulte Homes reserves the right to make changes or modifications to plan specifications, materials, features, or floor plans without notice. Room dimensions and square footages listed are approximate and actual square footage may vary by elevation. Please see a sales associate for details. Renderings are for illustrative purposes only and is not intended to be an actual representation of a specific home being offered. This material shall not constitute a valid offer in any state where prior registration is required or if void by law. Additional conditions, limitations, and restrictions apply; see a sales associate for details. ©2017 Pulte Home Corporation. PGI Realty 505-761-9606. All rights reserved. 9/17

