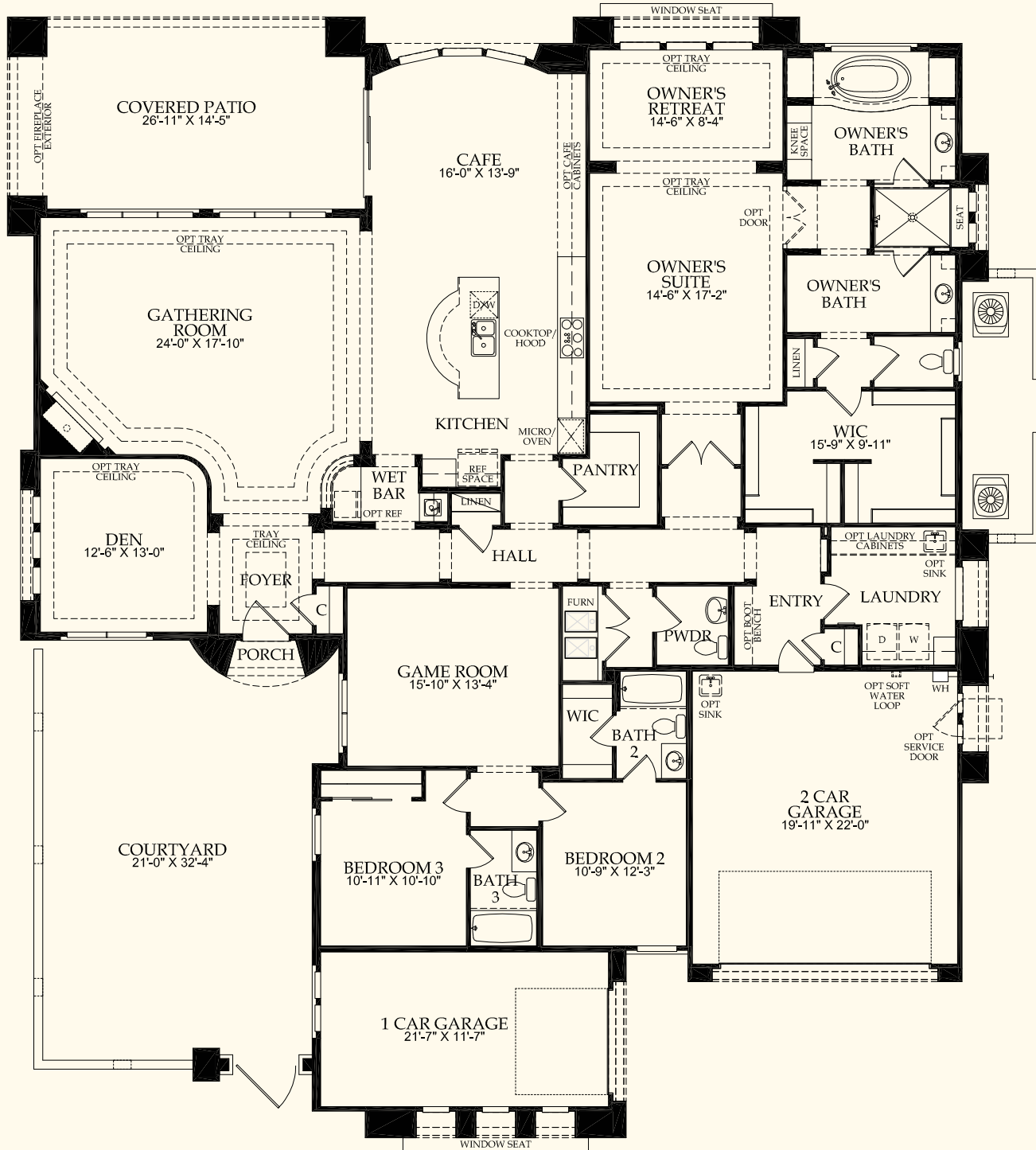


The 3-bedroom Courtside invites comfort and exudes modern elegance. A flow-through kitchen, café and gathering room connect to create the perfect space for those who like to entertain. The versatile design allows for an optional casita or cabana along with extra garage space. The Owner's Suite is the ultimate hideaway, offering a private retreat complete with a luxurious bath, floating vanities and oversized walk-in closet.



pulte.com/lascampanas | 218 Camino La Tierra, Santa Fe, NM 87506 | 505.349.9925 | lascampanas@pulte.com

In our continuing effort to improve our product, Pulte Homes reserves the right to make changes or modifications to plan specifications, materials, features, or floor plans without notice. Room dimensions and square footages listed are approximate and actual square footage may vary by elevation. Please see a sales associate for details. Renderings are for illustrative purposes only and is not intended to be an actual representation of a specific home being offered. This material shall not constitute a valid offer in any state where prior registration is required or if void by law. Additional conditions, limitations, and restrictions apply; see a sales associate for details. ©2017 Pulte Home Corporation. PGI Realty 505-761-9606. All rights reserved. 9/17

