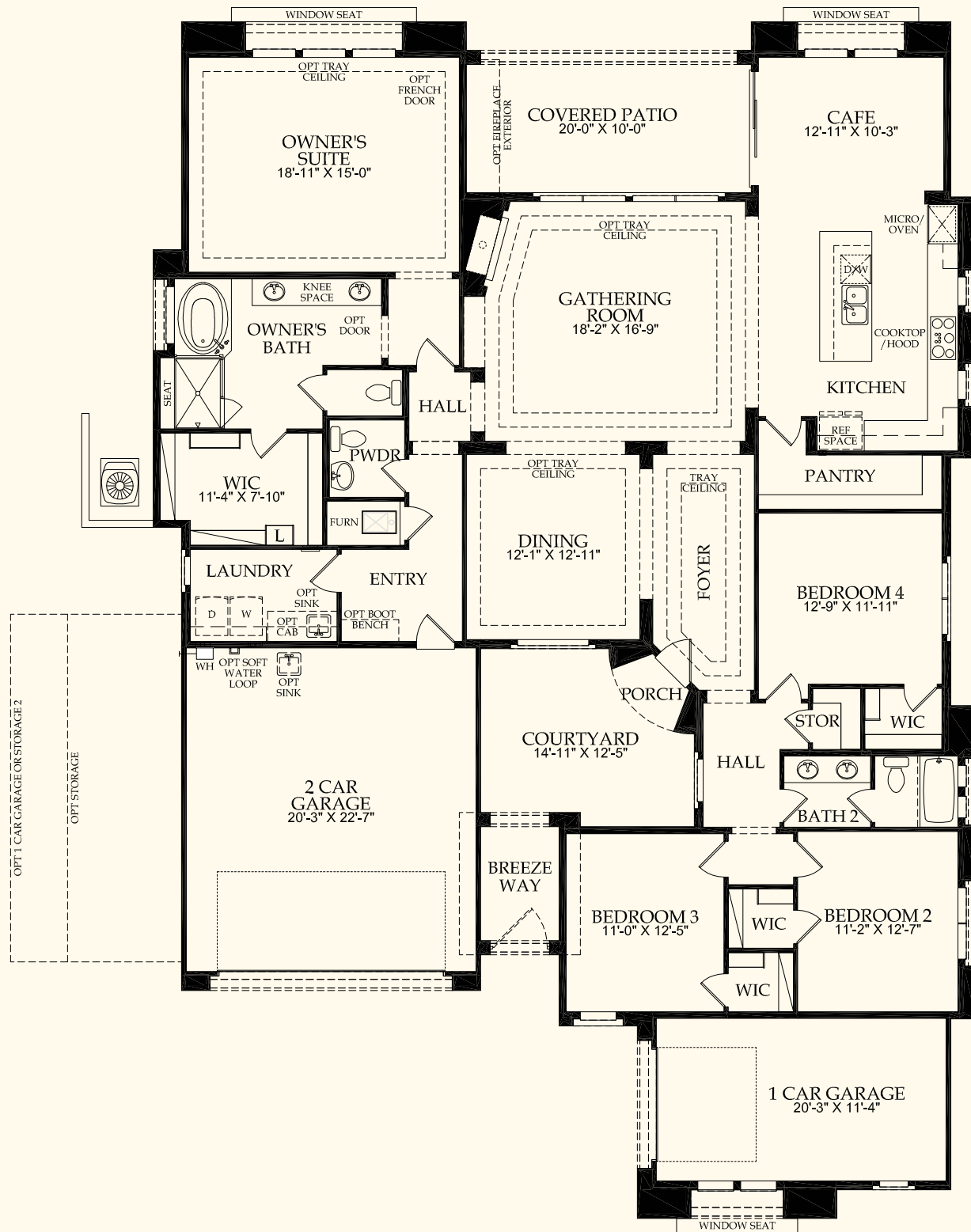


The versatile Catalina offers up to 4 bedrooms with an open flow-through kitchen and café overlooking the gathering room, offering ideal space for entertaining and everyday living. Sliding glass doors in the gathering room offer natural light and flow to the covered patio. Options for this plan include a guest suite or den which can easily become a home office.



pulte.com/lascampanas | 218 Camino La Tierra, Santa Fe, NM 87506 | 505.349.9925 | lascampanas@pulte.com

In our continuing effort to improve our product, Pulte Homes reserves the right to make changes or modifications to plan specifications, materials, features, or floor plans without notice. Room dimensions and square footages listed are approximate and actual square footage may vary by elevation. Please see a sales associate for details. Renderings are for illustrative purposes only and is not intended to be an actual representation of a specific home being offered. This material shall not constitute a valid offer in any state where prior registration is required or if void by law. Additional conditions, limitations, and restrictions apply; see a sales associate for details. ©2017 Pulte Home Corporation. PGI Realty 505-761-9606. All rights reserved. 9/17

