

Valverde

AT
LAS CAMPANAS

TECOLOTE / Plan D

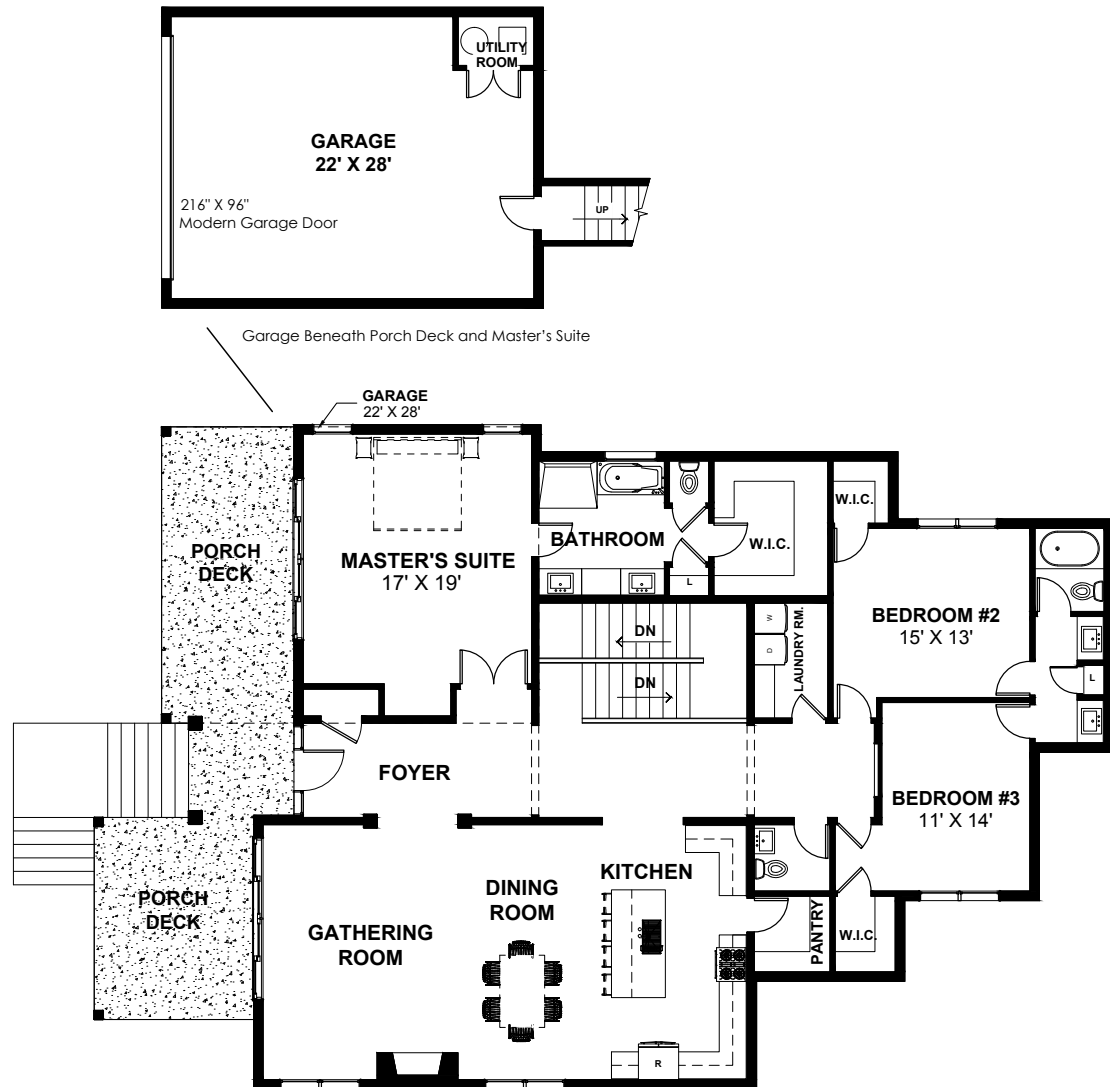
3 Bedrooms / 3.5 Bathrooms

Heated Area **2,494 SqFt**

Garage **616 SqFt**

Portals **448 SqFt**

Totals **3,558 SqFt**



Located off Las Campanas Drive and Paseo Aragon in the master-planned community of Las Campanas, North of Santa Fe



Schedule a tour:
Jonathan Bartlett, VP of Sales

505.986.2000

Jonathan@lascampanasrealty.com

